

MATH 1314
Chapter 1.8: Inverse Functions

INVERSE

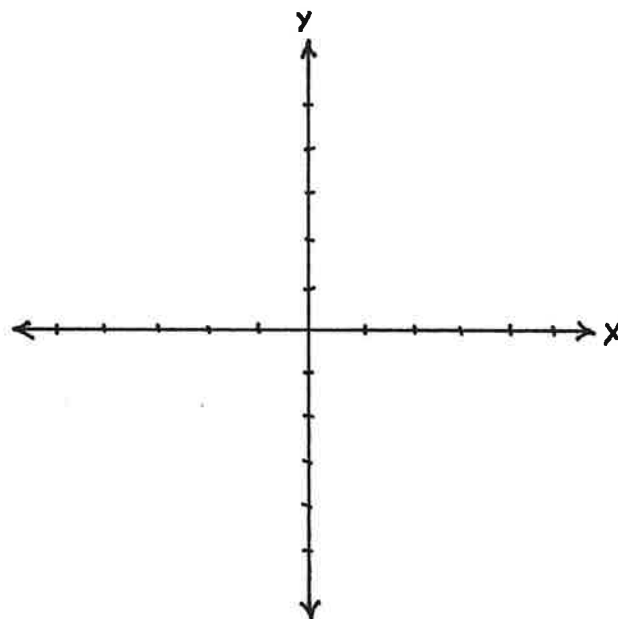
Example: find the inverse of $f(x) = 3x + 2$.

Example: find the inverse of $y = 7x - 5$.

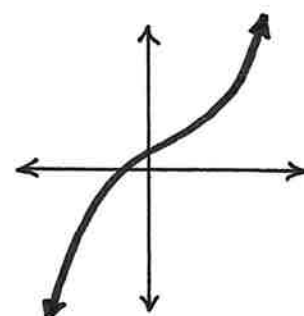
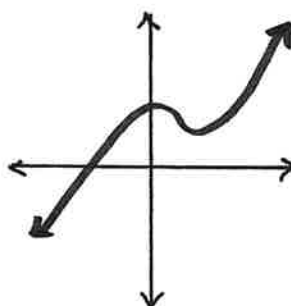
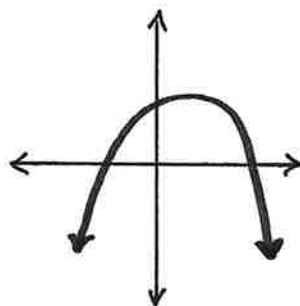
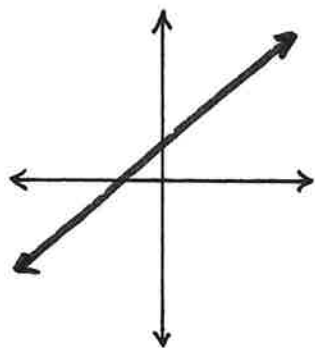
Example: find the inverse of $y = 5/x + 4$.

HORIZONTAL LINE TEST: 1 TO 1 FUNCTION

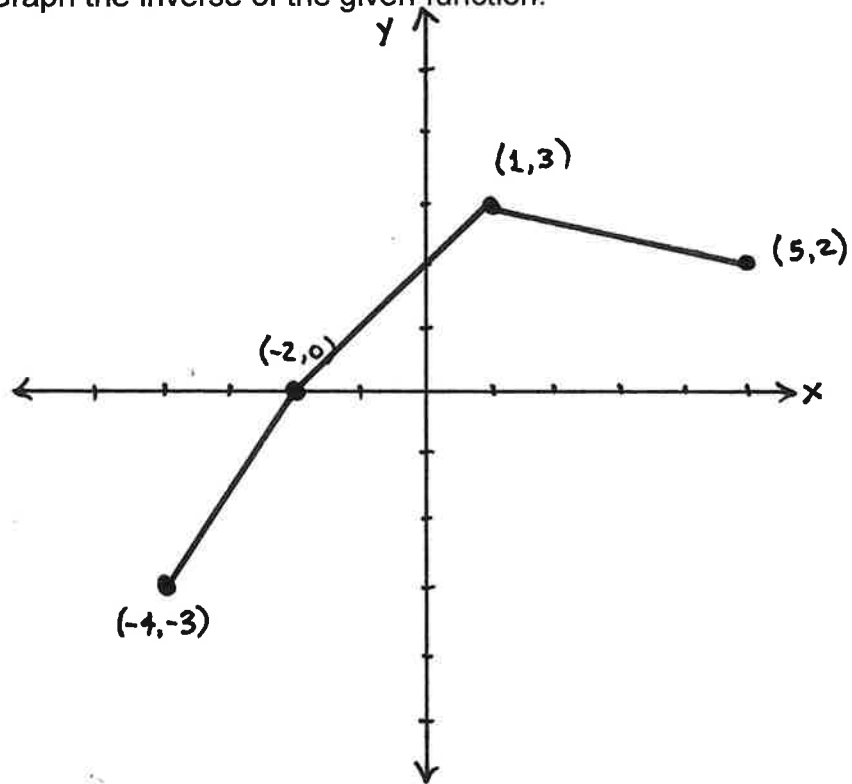
Find the inverse of $y = x^2$.



Are these functions 1 to 1 functions?



Example: Graph the inverse of the given function.



Example: Graph the inverse of $y = x^2 - 1$ with $x \geq 0$.

