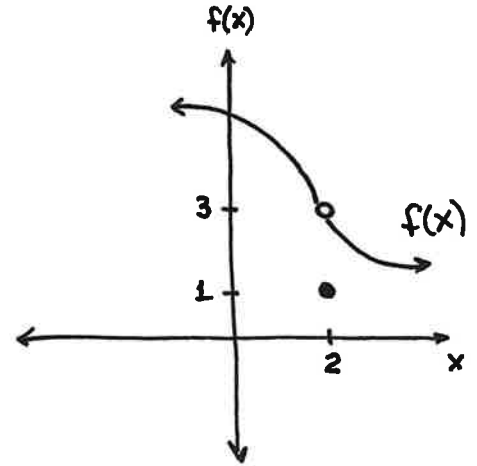
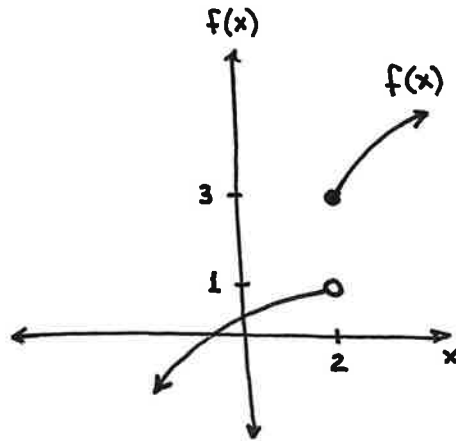
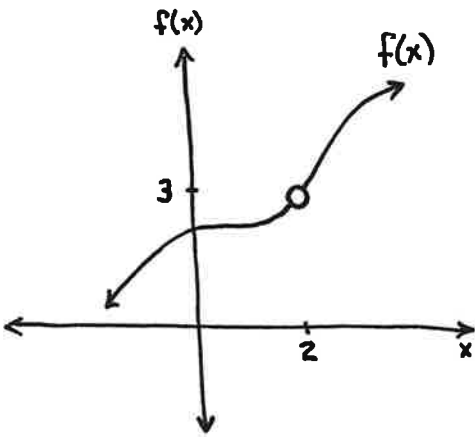


MATH 1325

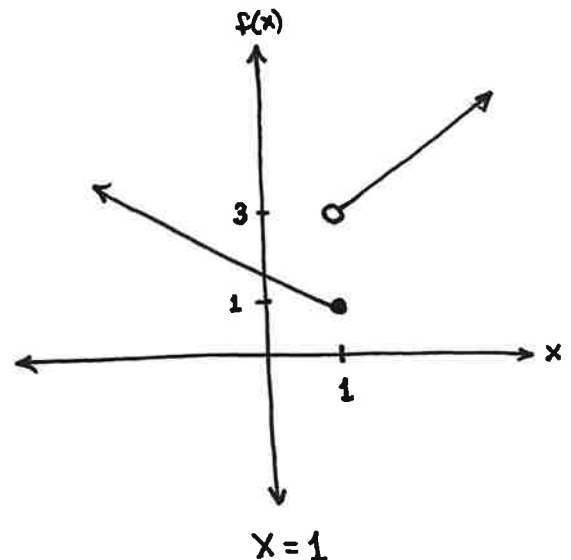
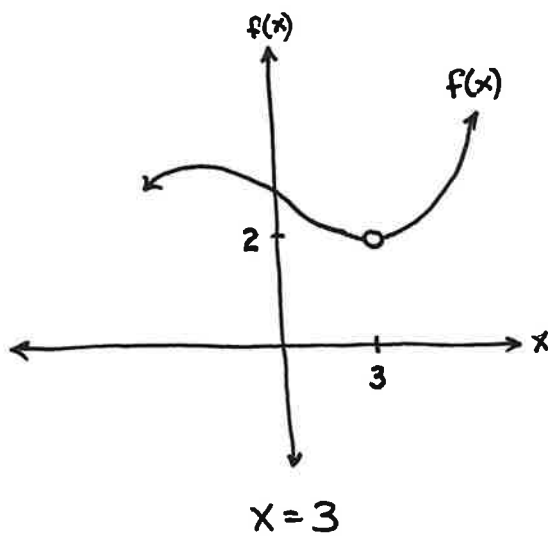
Chapter 11.9: Continuity And Differentiability

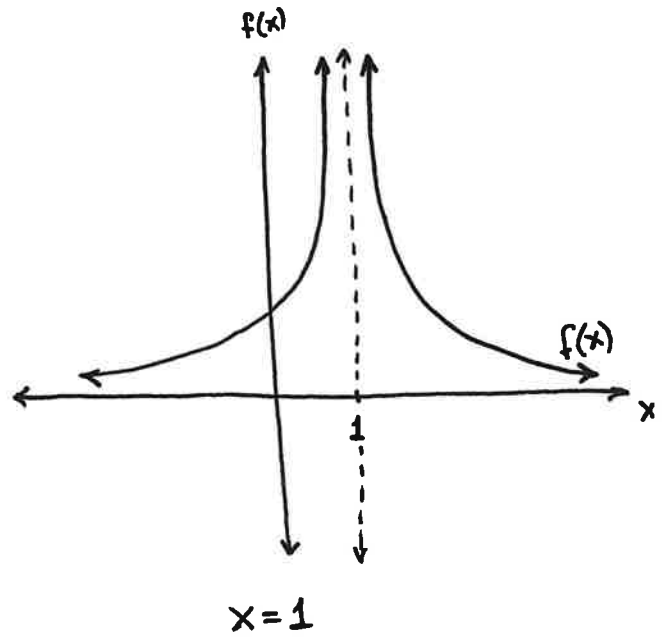
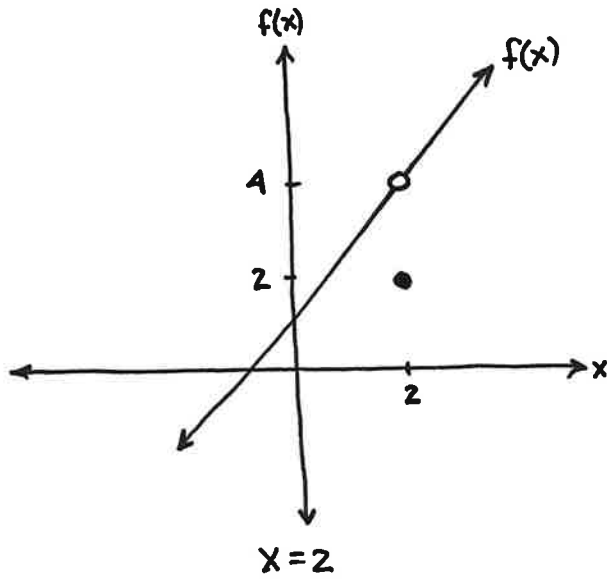
CONTINUOUS



CONTINUITY AT A POINT:

EXPLAIN WHY EACH FUNCTION IS NOT CONTINUOUS AT THE GIVEN POINT.

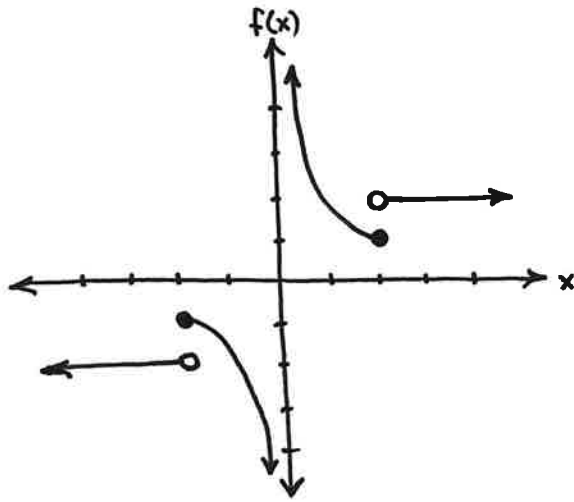




CONTINUITY AT ENDPOINTS:

CONTINUITY ON OPEN AND CLOSED INTERVALS

STATE WHETHER OR NOT THE FUNCTION IS CONTINUOUS ON THE GIVEN INTERVALS.



a) $(0, 2)$

b) $[0, 2]$

c) $(1, 3)$

d) $[-2, -1]$

CONTINUITY AND DIFFERENTIABILITY

