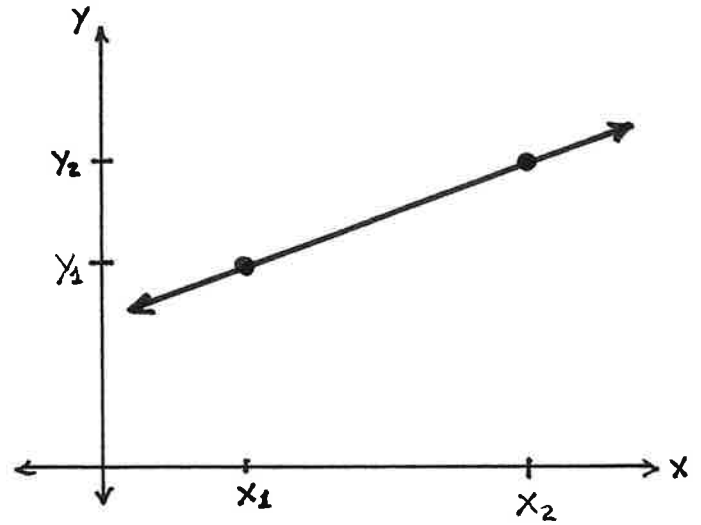


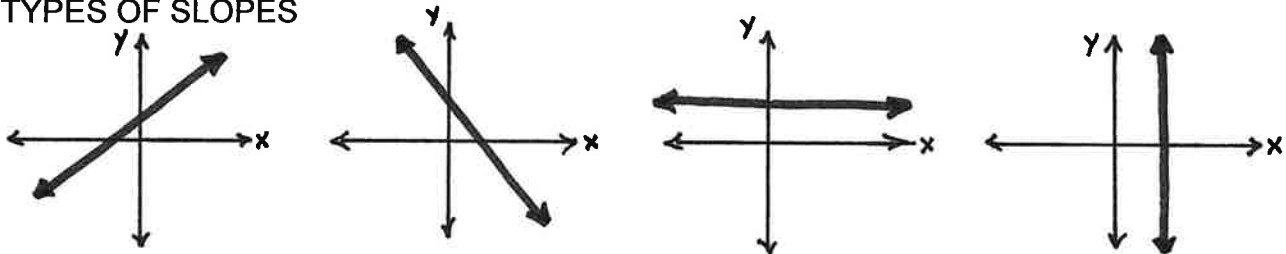
MATH 1314

Chapter 1.4: Linear Functions And Slope

SLOPE



TYPES OF SLOPES



Examples: Find the slope of the line containing the points.

$(-3, 4)$ and $(-4, -2)$

$(4, -2)$ and $(-1, 5)$

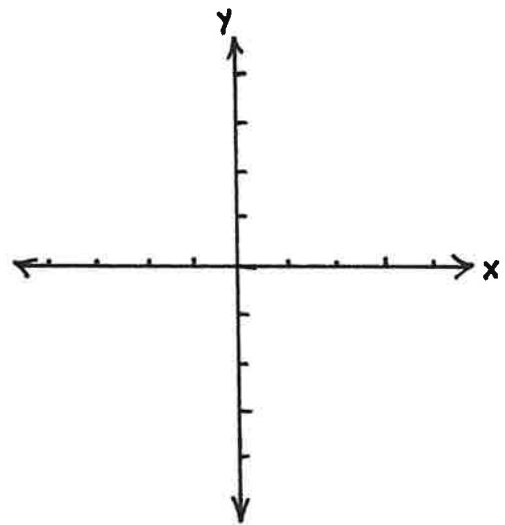
POINT-SLOPE FORM

Example: Find the equation of the line with slope 4 and containing the point $(-1, 3)$.

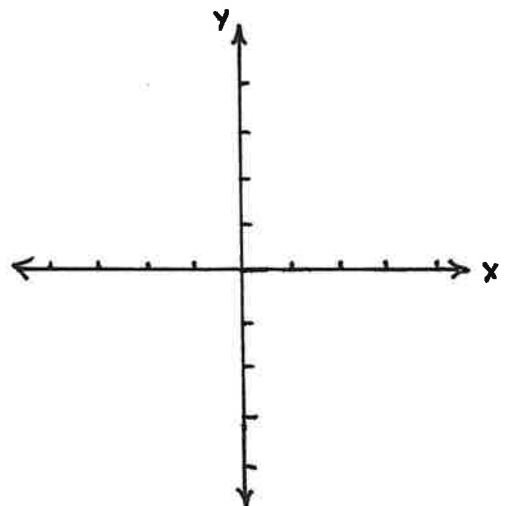
Example: Find the equation of the line containing the points (4, -3) and (-2, 6).

SLOPE-INTERCEPT FORM

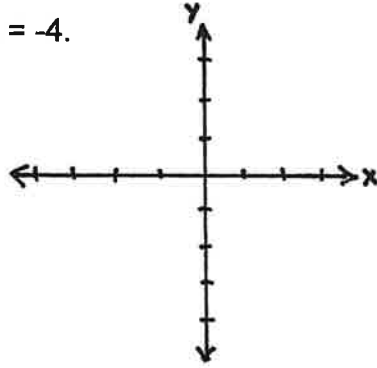
Example: Graph $f(x) = (-3/2)x + 2$.



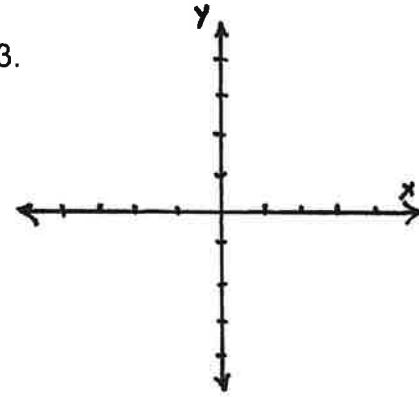
Example: Graph $y = x - 2$.



Example: Graph $y = -4$.



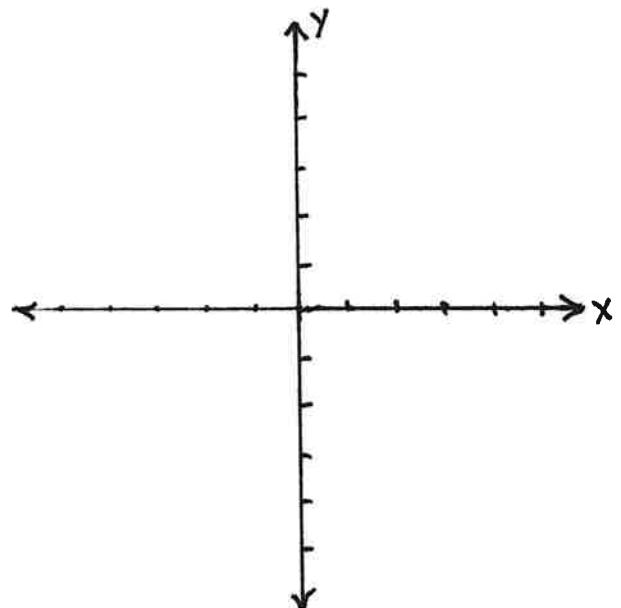
Example: Graph $x = -3$.



GENERAL FORM:

Example: Find the slope and y-intercept of the line $3x + 2y - 4 = 0$.

Example: Graph $3x + 6y - 12 = 0$.



FORMS OF EQUATIONS:

POINT-SLOPE

SLOPE-INTERCEPT

HORIZONTAL

VERTICAL

GENERAL

Equation Graph Features

